

WORKBENCH CONCEPTIONS

- Choose pre-engineered units (*single part number*) or build your own by modifying the "consist of" lists.
- Component details can be found on pages 66-69
- All pre-engineered units feature empty drawers (*no layouts*) and multiple drawer locking system
- All concepts can be assembled either left or right side
- Field assembled only (*easy to follow instructions provided*)
- Specify framework/housing color and drawer color, same as steps 1 and 2 on page 6.

Example = **DD251WBC01**
 (for dove gray frame/housing and dove gray drawers)

AA	BB	DD	HH	JJ	KK	PP
Ash	Wedgewood Blue	Dove Gray	Red Baron	Hunter Green	Vulcan Black	Putty



CONCEPT 1

Cat. No. ■■251WBC01

Consists of:		
Qty.	Cat. No.	Description
1	M352230000A0L	Bench Slender Pre-Engineered Cabinet
1	251OPL350	Bench Open Panel Leg
1	240853	Adjustable Footrest
1	251WHD60	Hardwood Work Surface, 60"w



CONCEPT 2

Cat. No. ■■251WBC02

Consists of:		
Qty.	Cat. No.	Description
1	M352230000A0L	Bench Slender Pre-Engineered Cabinet
1	251OPL350	Bench Open Panel Leg
1	240853	Adjustable Footrest
1	251WHD60	Hardwood Work Surface, 60"w
1	251WBS60	Back Stop, 60"w
1	251WSSR	Side Stop, RH
1	251WSSL	Side Stop, LH
1	2625	12"h Shelf Riser, 60"w



CONCEPT 3

Cat. No. ■■251WBC03

Consists of:		
Qty.	Cat. No.	Description
1	M352230000AOL	Bench Slender Pre-Engineered Cabinet
1	M352230000BOL	Bench Slender Pre-Engineered Cabinet
1	251WHD72	Hardwood Work Surface, 72"w



CONCEPT 4

Cat. No. ■■251WBC04

Consists of:		
Qty.	Cat. No.	Description
1	M352230000AOL	Bench Slender Pre-Engineered Cabinet
1	M352230000BOL	Bench Slender Pre-Engineered Cabinet
1	251WHD72	Hardwood Work Surface, 72"w
1	251WBS72	Back Stop, 72"w
1	251WSSR	Side Stop, RH
1	251WSSL	Side Stop, LH
1	2629	18"h Shelf Riser, 72"w
1	2631	Pick Rack, 72"w



CONCEPT 5

Cat. No. ■■251WBC05

Consists of:		
Qty.	Cat. No.	Description
1	M352230000BOL	Bench Slender Pre-Engineered Cabinet
2	251OPL350	Bench Open Panel Leg
2	251STR36	Stringer
1	251WHD72	Hardwood Work Surface, 72"w



CONCEPT 6

Cat. No. ■■251WBC06

Consists of:		
Qty.	Cat. No.	Description
1	M352230000BOL	Bench Slender Pre-Engineered Cabinet
2	251OPL350	Bench Open Panel Leg
2	251STR36	Stringer
1	251WHD72	Hardwood Work Surface, 72"w
1	251WBS72	Back Stop, 60"w
1	251WSSR	Side Stop, RH
1	251WSSL	Side Stop, LH
1	2629	18"h Shelf Riser, 72"w
1	2631	Pick Rack, 72"w



WORKBENCH CONCEPTIONS

- Choose pre-engineered units (*single part number*) or build your own by modifying the "consist of" lists.
- Component details can be found on pages 66-69
- All pre-engineered units feature empty drawers (*no layouts*) and multiple drawer locking system
- All concepts can be assembled either left or right side
- Field assembled only (*easy to follow instructions provided*)
- Specify framework/housing color and drawer color, same as step 2 on page 6.

Example = **DD251WBC01**
 (for dove gray frame/housing and dove gray drawers)

AA	BB	DD	HH	JJ	KK	PP
Ash	Wedgewood Blue	Dove Gray	Red Baron	Hunter Green	Vulcan Black	Putty



CONCEPT 7

Cat. No. **251WBC07**

Consists of:

Qty.	Cat. No.	Description
1	M68303010140L	Eye-Level Standard Pre-Engineered Cabinet
1	251OPL350	Bench Open Panel Leg
1	251UCSD60	Under-Counter Shelf (set of 2)
1	250HILO	Hi-Lo Bracket Kit
1	251WHD60	Hardwood Work Surface, 60"w



CONCEPT 8

Cat. No. **251WBC08**

Consists of:

Qty.	Cat. No.	Description
1	M68303010140L	Eye-Level Standard Pre-Engineered Cabinet
1	251OPL350	Bench Open Panel Leg
1	251UCSD60	Under-Counter Shelf (set of 2)
1	250HILO	Hi-Lo Bracket Kit
1	251WHD60	Hardwood Work Surface, 60"w
1	251WBS60	Back Stop 60"w
1	251WSSL	Side Stop, LH
1	2625	12"h Shelf Riser, 60"w



CONCEPT 9

Cat. No. ■■251WBC09

Consists of:

Qty.	Cat. No.	Description
1	M68303010140L	Eye-Level Standard Pre-Engineered Cabinet
1	M353030000B0L	Bench Standard Pre-Engineered Cabinet
1	250HILO	Hi-Lo Bracket Kit
1	251WHD72	Hardwood Work Surface, 72"w



CONCEPT 10

Cat. No. ■■251WBC10

Consists of:

Qty.	Cat. No.	Description
1	M68303010140L	Eye-Level Standard Pre-Engineered Cabinet
1	M353030000B0L	Bench Standard Pre-Engineered Cabinet
1	250HILO	Hi-Lo Bracket Kit
1	251WHD72	Hardwood Work Surface, 72"w
1	251WBS72	Back Stop 72"w
1	251WSSL	Side Stop, LH
1	2629	18"h Shelf Riser, 72"w
1	2631	Pick Rack, 72"w



CONCEPT 11

Cat. No. ■■251WBC11

Consists of:

Qty.	Cat. No.	Description
1	M353030000A0L	Bench Standard Pre-Engineered Cabinet
1	251CPL350	Bench Closed Panel Leg
2	251UCS72	Under-Counter Shelf
1	251MDP72350	Bench Modesty Panel
1	251WHD72	Hardwood Work Surface, 72"w



CONCEPT 12

Cat. No. ■■251WBC12

Consists of:

Qty.	Cat. No.	Description
1	M353030000A0L	Bench Standard Pre-Engineered Cabinet
1	251CPL350	Bench Closed Panel Leg
2	251UCS72	Under-Counter Shelf
1	251MDP72350	Bench Modesty Panel
1	251WHD72	Hardwood Work Surface, 72"w
1	251WSSR	Side Stop, RH
1	251WSSL	Side Stop, LH
1	251BRS7221	21"h Bookcase Riser, 72"w
1	251RBP7221	21"h Bookcase Riser Back Panel, 72"w
1	79020	Light Fixture



WORKBENCH CONCEPTIONS

- Choose pre-engineered units (*single part number*) or build your own by modifying the "consist of" lists.
- Component details can be found on pages 66-69
- All pre-engineered units feature empty drawers (*no layouts*) and multiple drawer locking system
- All concepts can be assembled either left or right side
- Field assembled only (*easy to follow instructions provided*)
- Specify framework/housing color and drawer color, same as step 2 on page 6.

Example = **DD251WBC01**
 (for dove gray frame/housing and dove gray drawers)

AA	BB	DD	HH	JJ	KK	PP
Ash	Wedgewood Blue	Dove Gray	Red Baron	Hunter Green	Vulcan Black	Putty



CONCEPT 13

Cat. No. **251WBC13**

Consists of:

Qty.	Cat. No.	Description
1	M353030000A0L	Bench Standard Pre-Engineered Cabinet
1	251CPL350	Bench Closed Panel Leg
2	251UCS72	Under-Counter Shelf
1	251MDP72350	Bench Modesty Panel
1	251WHD72	Hardwood Work Surface, 72"w
1	251WSSR	Side Stop, RH
1	251WSSL	Side Stop, LH
1	251BRS7221	21"h Bookcase Riser, 72"w
1	251RBP7221	21"h Bookcase Riser Back Panel, 72"w
1	79020	Light Fixture
2	251BKCD270M	Bookcase with Doors, 36"w



CONCEPT 14

Cat. No. ■■251WBC14

Consists of:

Qty.	Cat. No.	Description
1	M353030000AOL	Bench Standard Pre-Engineered Cabinet
1	M353030000BOL	Bench Standard Pre-Engineered Cabinet
1	251WHD90	Hardwood Work Surface, 90"w



CONCEPT 15

Cat. No. ■■251WBC15

Consists of:

Qty.	Cat. No.	Description
1	M353030000AOL	Bench Standard Pre-Engineered Cabinet
1	M353030000BOL	Bench Standard Pre-Engineered Cabinet
1	251WHD90	Hardwood Work Surface, 90"w
1	251BRS9021	Bookcase Riser



CONCEPT 16

Cat. No. ■■251WBC16

Consists of:

Qty.	Cat. No.	Description
1	M353030000AOL	Bench Standard Pre-Engineered Cabinet
1	M353030000BOL	Bench Standard Pre-Engineered Cabinet
1	251WHD90	Hardwood Work Surface, 90"w
1	251BRS9021	Bookcase Riser
3	251BKCD270	Bookcase with Doors, 30"w



WORKBENCH CONCEPTIONS

- Choose pre-engineered units (*single part number*) or build your own by modifying the "consist of" lists.
- Component details can be found on pages 66-69
- All pre-engineered units feature empty drawers (*no layouts*) and multiple drawer locking system
- All concepts can be assembled either left or right side
- Field assembled only (*easy to follow instructions provided*)
- Specify framework/housing color and drawer color, same as step 2 on page 6.

Example = **DD251WBC01**
 (for dove gray frame/housing and dove gray drawers)

AA	BB	DD	HH	JJ	KK	PP
Ash	Wedgewood Blue	Dove Gray	Red Baron	Hunter Green	Vulcan Black	Putty



CONCEPT 17

Cat. No. ■■251WBC17

Consists of:		
Qty.	Cat. No.	Description
1	M353030000A0L	Bench Standard Pre-Engineered Cabinet
1	M353030000B0L	Bench Standard Pre-Engineered Cabinet
1	251OPL350	Bench Open Panel Leg
1	251WHD90	Hardwood Work Surface, 90" w
1	251WHD60	Hardwood Work Surface, 60" w
1	250SPLICE	Splice Plate Kit





CONCEPT 18

Cat. No. ■■251WBC18

Consists of:

Qty.	Cat. No.	Description
1	M353030000A0L	Bench Standard Pre-Engineered Cabinet
1	M353030000B0L	Bench Standard Pre-Engineered Cabinet
1	251OPL350	Bench Open Panel Leg
1	251WHD90	Hardwood Work Surface, 90" w
1	251WHD60	Hardwood Work Surface, 60" w
1	250SPICE	Splice Plate Kit
2	251BRS6021	Bookcase Riser
2	251RBP6021	Bookcase Riser Back Panel
1	251BCR3021	Bookcase Corner Riser
2	79020	Light Fixture



CONCEPT 19

Cat. No. ■■251WBC19

Consists of:

Qty.	Cat. No.	Description
1	M353030000A0L	Bench Standard Pre-Engineered Cabinet
1	M353030000B0L	Bench Standard Pre-Engineered Cabinet
1	251OPL350	Bench Open Panel Leg
1	251WHD90	Hardwood Work Surface, 90" w
1	251WHD60	Hardwood Work Surface, 60" w
1	250SPICE	Splice Plate Kit
2	251BRS6021	Bookcase Riser
2	251RBP6021	Bookcase Riser Back Panel
1	251BCR3021	Bookcase Corner Riser
2	79020	Light Fixture
4	251BKCD270	Bookcase with Doors, 30" w

WORKBENCH ACCESSORIES

MODULAR STORAGE SYSTEMS THAT PROVIDE FLEXIBILITY with a custom building block approach to storage that maximizes use of cubic space. Tackle your storage project by first determining your size requirement. Then work your way through the accessories and configure a workbench that is custom built for your space requirements.

Color Selection Determine which color you need and add the two letter digits as a prefix to part numbers.

- | | | | | | | |
|---------------|--------------------------|---------------------|---------------------|------------------------|------------------------|-----------------|
| AA Ash | BB Wedgewood Blue | DD Dove Gray | HH Red Baron | JJ Hunter Green | KK Vulcan Black | PP Putty |
|---------------|--------------------------|---------------------|---------------------|------------------------|------------------------|-----------------|



Modular Drawer Cabinets

Choose from any Standard Pre-Engineered Cabinet (pages 7-15) or Slender Pre-Engineered Cabinet (pages 18-22) or create your own custom cabinet (pages 40-43).

Note: Consider cabinets with Multiple Drawer Access (M) locking, since tipping is highly unlikely.



Panel Legs

- One-piece, heavy-gauge welded frame pre-punched
- Supplied with knock-outs for customer supplied electrical outlet
- Supplied with leg levelers and mounting hardware
- Match panel leg height to cabinet height chosen

Specify color

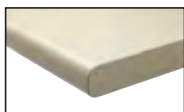
Open Panel Leg (for industrial applications)

- No. **251OPL270** - Desk, 26-7/8"H
- No. **251OPL310** - Table, 30-1/8"H
- No. **251OPL350** - Bench, 33-1/4"H
- No. **251OPL400** - Mid-Range, 37-3/16"H
- No. **251OPL490** - Counter, 44-1/4"H

Closed Panel Leg (for office applications)

- No. **251CPL270** - Desk, 26-7/8"H
- No. **251CPL310** - Table, 30-1/8"H
- No. **251CPL350** - Bench, 33-1/4"H
- No. **251CPL400** - Midrange, 37-3/16"H
- No. **251CPL490** - Counter, 44-1/4"H

Work Surfaces – Custom lengths for all work surfaces are available on special request.



Laminate (WLT) = Particle board core with plastic laminate cover.

- Ideal for light-duty applications
- 180° soft edge, chip resistant
- Color = Putty or Dove Gray Only (Specify color)

- NO. **251WLT30** - 30"d x 1-5/8"t x 30"w
- NO. **251WLT45** - 30"d x 1-5/8"t x 45"w
- NO. **251WLT60** - 30"d x 1-5/8"t x 60"w
- NO. **251WLT72** - 30"d x 1-5/8"t x 72"w
- NO. **251WLT84** - 30"d x 1-5/8"t x 84"w
- NO. **251WLT90** - 30"d x 1-5/8"t x 90"w
- NO. **251WLT96** - 30"d x 1-5/8"t x 96"w
- NO. **251WLT120** - 30"d x 1-5/8"t x 120"w



Hardwood (WHD) = Solid-laminated with rounded edges and sealed finish.

- Ideal for precision work
- Sealed Kiln-dried hardwoods
- 3/16" radius edges

- NO. **251WHD30** - 30"d x 1-3/4"t x 30"w
- NO. **251WHD45** - 30"d x 1-3/4"t x 45"w
- NO. **251WHD60** - 30"d x 1-3/4"t x 60"w
- NO. **251WHD72** - 30"d x 1-3/4"t x 72"w
- NO. **251WHD84** - 30"d x 1-3/4"t x 84"w
- NO. **251WHD90** - 30"d x 1-3/4"t x 90"w
- NO. **251WHD96** - 30"d x 1-3/4"t x 96"w
- NO. **251WHD120** - 30"d x 1-3/4"t x 120"w



Steel (WSL) = 12 Gauge formed panel with reinforcing channels.

- Ideal for heavy-duty maintenance work
- Not for use with two panel legs

Specify color from below

- NO. **251WSL30** - 30"d x 1-3/4"t x 30"w
- NO. **251WSL45** - 30"d x 1-3/4"t x 45"w
- NO. **251WSL60** - 30"d x 1-3/4"t x 60"w
- NO. **251WSL72** - 30"d x 1-3/4"t x 72"w
- NO. **251WSL84** - 30"d x 1-3/4"t x 84"w
- NO. **251WSL90** - 30"d x 1-3/4"t x 90"w
- NO. **251WSL96** - 30"d x 1-3/4"t x 96"w



Stainless (WST) = 16-Gauge type 304, #4 finish formed stainless steel cover over Industrial Grade Particle Board (ISPB).

- For the ultimate workbench application
- Edges are wrapped and welded

- NO. **251WST30** - 30"d x 1-5/8"t x 30"w
- NO. **251WST45** - 30"d x 1-5/8"t x 45"w
- NO. **251WST60** - 30"d x 1-5/8"t x 60"w
- NO. **251WST72** - 30"d x 1-5/8"t x 72"w
- NO. **251WST84** - 30"d x 1-5/8"t x 84"w
- NO. **251WST90** - 30"d x 1-5/8"t x 90"w
- NO. **251WST96** - 30"d x 1-5/8"t x 96"w
- NO. **251WST120** - 30"d x 1-5/8"t x 120"w



Stringers for Cabinet-to-Leg Configuration

- Formed steel channel attaches panel leg to cabinet with mounting hardware supplied

Specify color

Used with
Slender Cabinet

No. ■ **251STR60SL**
No. ■ **251STR72SL**
No. ■ **251STR84SL**
No. ■ **251STR90SL**
No. ■ **251STR96SL**
No. ■ **251STR108SL**
No. ■ **251STR120SL**

Used with
Standard Cabinet

No. ■ **251STR60**
No. ■ **251STR72**
No. ■ **251STR84**
No. ■ **251STR90**
No. ■ **251STR96**
No. ■ **251STR108**
No. ■ **251STR120**

Used with
Medium Cabinet

No. ■ **251STR60M**
No. ■ **251STR72M**
No. ■ **251STR84M**
No. ■ **251STR90M**
No. ■ **251STR96M**
No. ■ **251STR108M**
No. ■ **251STR120M**



Stringers for Leg-to-Leg Configuration

- Formed steel channel attaches panel leg to panel leg with mounting hardware supplied

Specify color

No. ■ **251STR30WB** - 30"W
No. ■ **251STR45WB** - 45"W
No. ■ **251STR60WB** - 60"W
No. ■ **251STR72WB** - 72"W
No. ■ **251STR84WB** - 84"W
No. ■ **251STR90WB** - 90"W
No. ■ **251STR96WB** - 96"W
No. ■ **251STR120WB** - 120"W



Under-Counter Shelves for Cabinet-to-Leg Configuration

- Provides additional storage space below work surface
- 150 lb. evenly distributed weight capacity, 12-1/2" deep
- Formed steel panel attaches to panel leg and cabinet with brackets and hardware supplied

Specify color

Used with
Slender Cabinet

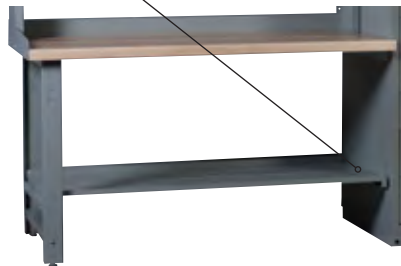
No. ■ **251UCS60SL**
No. ■ **251UCS72SL**
No. ■ **251UCS84SL**
No. ■ **251UCS90SL**
No. ■ **251UCS96SL**
No. ■ **251UCS108SL**

Used with
Standard Cabinet

No. ■ **251UCS60**
No. ■ **251UCS72**
No. ■ **251UCS84**
No. ■ **251UCS90**
No. ■ **251UCS96**
No. ■ **251UCS108**
No. ■ **251UCS120**

Used with
Medium Cabinet

No. ■ **251UCS60M**
No. ■ **251UCS72M**
No. ■ **251UCS84M**
No. ■ **251UCS90M**
No. ■ **251UCS96M**
No. ■ **251UCS108M**
No. ■ **251UCS120M**



Under-Counter Shelves Side-Mounted to Cabinet

- Available in pairs for work surfaces side-mounted to the cabinet using a Hi-Lo Bracket.

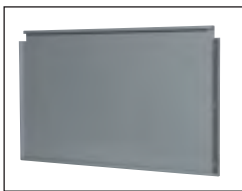
Specify color

for 60" w Work Surface

NO. ■ **251UCSD60** - 2 shelves

for 72" w Work Surface

NO. ■ **251UCSD72** - 2 shelves



Modesty Panel

- Provides privacy below for workbench applications
- Formed steel panel attaches panel leg to cabinet with supplied hardware
- Match modesty panel size to width of work surface and cabinet

Specify color

for 60" w Work Surface with Desk/Table Slender Cabinet

NO. ■ **251MDP60270SL**

NO. ■ **251MDP60270**

for 60" w Work Surface with Bench/Mid-Range Slender Cabinet

NO. ■ **251MDP60350SL**

NO. ■ **251MDP60350**

for 72" w Work Surface with Desk/Table Slender Cabinet

NO. ■ **251MDP72270SL**

NO. ■ **251MDP72270**

for 72" w Work Surface with Bench/Mid-Range Slender Cabinet

NO. ■ **251MDP72350SL**

NO. ■ **251MDP72350**

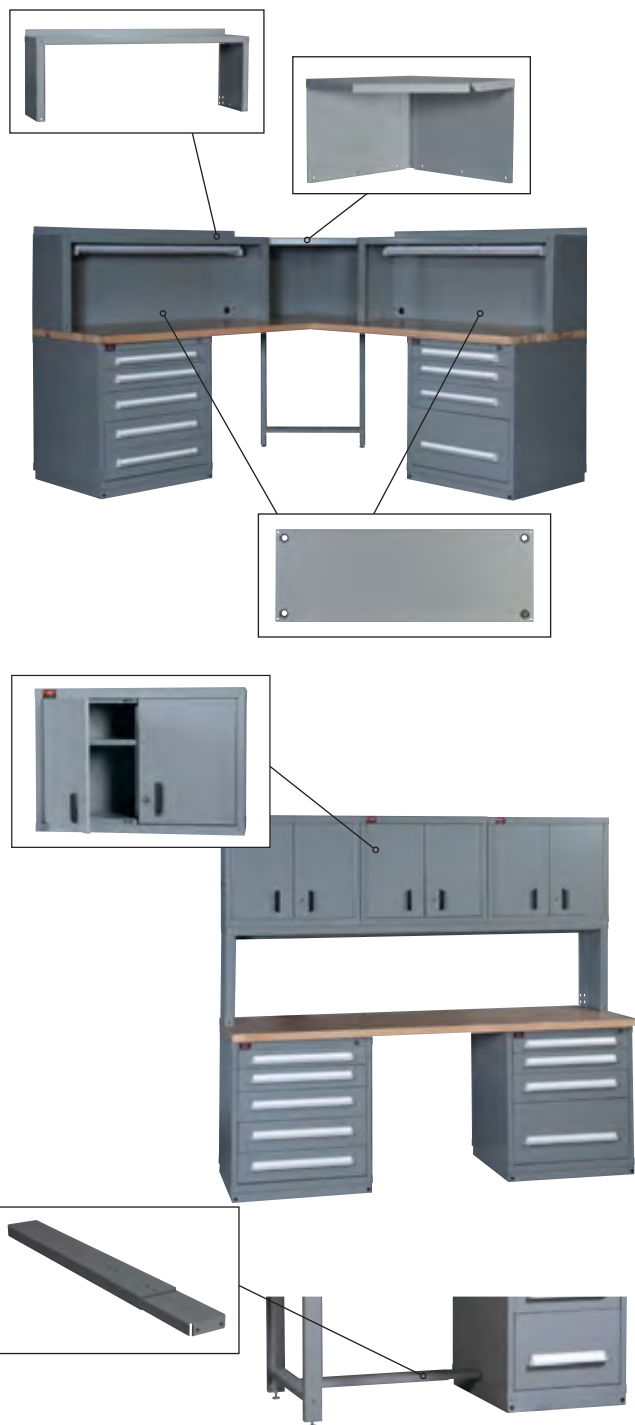


WORKBENCH ACCESSORIES

MODULAR STORAGE SYSTEMS THAT PROVIDE FLEXIBILITY with a custom building block approach to storage that maximizes use of cubic space. Tackle your storage project by first determining your size requirement. Then work your way through the accessories and configure a workbench that is custom built for your space requirements.

Color Selection Determine which color you need and add the two letter digits as a prefix to part numbers.

- AA** Ash
- BB** Wedgewood Blue
- DD** Dove Gray
- HH** Red Baron
- JJ** Hunter Green
- KK** Vulcan Black
- PP** Putty



Bookcase Risers

- Designed to support the weight of up to three, loaded Bookcases
- Corner riser used to join two adjacent ends (*includes Back Panel*). Attaches to work surface with supplied hardware
- Hardware supplied to support the optional **No. 79020** Light Fixture

Bookcase Riser Specify color

- NO. ■ 251BRS6018** - 60" w x 14" d x 18" h
- NO. ■ 251BRS6021** - 60" w x 14" d x 21" h
- NO. ■ 251BRS6024** - 60" w x 14" d x 24" h
- NO. ■ 251BRS7218** - 72" w x 14" d x 18" h
- NO. ■ 251BRS7221** - 72" w x 14" d x 21" h
- NO. ■ 251BRS7224** - 72" w x 14" d x 24" h
- NO. ■ 251BRS9018** - 90" w x 14" d x 18" h
- NO. ■ 251BRS9021** - 90" w x 14" d x 21" h
- NO. ■ 251BRS9024** - 90" w x 14" d x 24" h

Bookcase Corner Riser Specify color

- NO. ■ 251BCR3018** - 90" w x 14" d x 18" h
- NO. ■ 251BCR3021** - 90" w x 14" d x 21" h
- NO. ■ 251BCR3024** - 90" w x 14" d x 24" h

Bookcase Riser Back Panels

- Protected cord access holes in all four corners
- Formed steel panel attaches to Riser with hardware supplied.

Specify color

- NO. ■ 251RBP6018** - 60" w x 18" h
- NO. ■ 251RBP6021** - 60" w x 21" h
- NO. ■ 251RBP6024** - 60" w x 24" h
- NO. ■ 251RBP7218** - 72" w x 18" h
- NO. ■ 251RBP7221** - 72" w x 21" h
- NO. ■ 251RBP7224** - 72" w x 24" h
- NO. ■ 251RBP9018** - 90" w x 18" h
- NO. ■ 251RBP9021** - 90" w x 21" h
- NO. ■ 251RBP9024** - 90" w x 24" h

Bookcases

- One bottom shelf and one adjustable shelf included with 100 lb. capacity each
- Overhead storage unit attaches to riser with supplied hardware
- Can be wall-mounted, hardware not included

30"W without lockable swing doors Specify color

- NO. ■ 251BKC270** - 30" w x 14" d x 24-3/4" h
- NO. ■ 251BKC350** - 30" w x 14" d x 31-1/8" h

30"W with lockable swing doors Specify color

- NO. ■ 251BKCD270** - 30" w x 14" d x 24-3/4" h
- NO. ■ 251BKCD350** - 30" w x 14" d x 31-1/8" h

36"W without lockable swing doors Specify color

- NO. ■ 251BKC270M** - 36" w x 14" d x 24-3/4" h
- NO. ■ 251BKC350M** - 36" w x 14" d x 31-1/8" h

36"W with lockable swing doors Specify color

- NO. ■ 251BKCD270M** - 36" w x 14" d x 24-3/4" h
- NO. ■ 251BKCD350M** - 36" w x 14" d x 31-1/8" h

Adjustable Footrest

- Multi-formed, reinforced steel channels pre-punched for assembly
- Sleeved and adjustable for many length combinations

Specify color

- NO. ■ 240853** - 27" to 46-1/4"
- NO. ■ 240854** - 46-1/4" to 69"
- NO. ■ 240855** - 18" to 29"



Side Stops

- Front tapered to 1-1/2" above work surface with rounded front edge. Extends 3" above work surface
- Includes mounting fasteners

Specify color

NO. ■ 251WSSR - Right Side

NO. ■ 251WSSL - Left Side

Back Stops

- Extends 3" above work surface
- Match the length of the Back Stop to the work surface width chosen
- Includes mounting fasteners

Specify color

NO. ■ 251WBS60 - 60"w

NO. ■ 251WBS84 - 84"w

NO. ■ 251WBS72 - 72"w

NO. ■ 251WBS90 - 90"w

Shelf Risers

- Match the width of the Shelf Riser to the work surface width chosen

Specify color

60"w Work Surface

72"w Work Surface

NO. ■ 2625 - 12"h x 10-1/2"d

NO. ■ 2626 - 12"h x 10-1/2"d

NO. ■ 2628 - 18"h x 14"d

NO. ■ 2629 - 18"h x 14"d

Pick Racks

- Allows easy hanging of plastic bins for additional on-hand storage
- Match the width of the Pick Rack to the Shelf Riser width chosen

Specify color

NO. ■ 2630 - 60"w

NO. ■ 2631 - 72"w

Plastic Bins (Color - blue only)

- Impervious to most solvents and corrosives

NO. 78203 - 4-1/8"w x 4-1/8"d x 3"h

NO. 78206 - 4-1/8"w x 7-1/4"d x 3"h

NO. 78209 - 5-7/8"w x 11-1/2"d x 5"h

Outlet Strip (Color - light gray only)

- Easily attaches to any flanged surface
- UL approved for 15 AMPS @ 125V
- Match the length of the Outlet Strip to the work surface width chosen

NO. 2662 - 5 outlets - 60"w

NO. 2663 - 8 outlets - 72" w

Hi-Lo Bracket Kit

- Allows for mounting work surface directly to the side of a cabinet
- Galvanized finish, includes mounting fasteners

NO. 250HILO

Splice Plate Kit

- Allows for attaching two (2) worksurfaces into a corner, creating an "L"
- Galvanized finish, includes mounting fasteners

NO. 250SPLICE

